

**PRO-SERIES**  
*Equipment*

**INSTALLATION MANUAL /  
OPERATION INSTRUCTIONS**

***PSE TCPL-6***

***PSE TCPL-6***

Scissor Pad Lift  
6,000 LB. Capacity

**Installation Manual /  
Operation Instructions**



**Thank You For  
Your Purchase!**

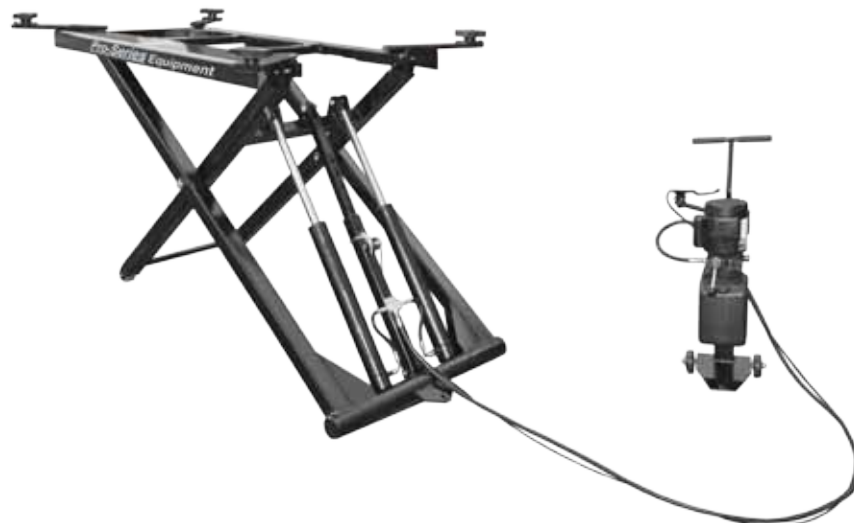
We reserve the right to make changes in specifications  
without notice and without making changes retroactive.



To help prevent possible serious injury and / or  
death, Carefully read this manual and review all  
warnings and instructions before use!

**PRO-SERIES**  
*Equipment*

<b>1.0 Introduction</b> .....	<b>3</b>
1.1 Intended Use .....	3
1.2 Dimension Diagram .....	5
1.3 Product Specifications .....	6
<b>2.0 General Safety</b> .....	<b>6</b>
2.1 Level of Danger .....	6
2.2 Hazards / Warnings .....	6-7
2.3 Cautions / Warnings .....	8-9
2.4 Safety Instructions .....	10
<b>3.0 Safety Warnings</b> .....	<b>11-13</b>
<b>4.0 Installation</b> .....	<b>14</b>
4.1 Assembly Instructions .....	14
4.2 Determine Proper Lift Location .....	14
4.3 To Attach Hydraulic Pump To Lift .....	14
4.4 To Fill Oil Tank with Hydraulic Oil .....	14
<b>5.0 Operating Instructions</b> .....	<b>15</b>
5.1 Check The Safety Lock Assembly .....	15
5.2 To Position, Lift And Lower Vehicles on Lift .....	15-16
<b>6.0 Trouble Shooting</b> .....	<b>17</b>
<b>7.0 Diagrams</b> .....	<b>18</b>
7.1 Parts List / Assembly Diagram A .....	18
7.2 Parts List / Assembly Diagram B .....	19
7.3 Parts List / Assembly Diagram C .....	20
<b>8.0 Contact Information</b> .....	<b>21</b>
<b>Warranty Activation Form</b> .....	<b>24</b>



Thank you for purchasing a hydraulic lift from Advance Auto Parts! This machine has been constructed to the best quality safety principles. This manual has been made in order to supply the owner as well as the user with basic instructions for the correct installation and use of this lift. The owner of this equipment is responsible to ensure that this lift is installed and operated using the guidelines set forth in this manual, failure to comply may result in the voiding of this equipment's warranty.

Read this guide thoroughly before installing or using the machine. This guide contains the instructions for installation, use and maintenance of the PSE TCPL-6 hydraulic lift.

This machine is operated by an electric motor controlling a hydraulic pump, which delivers the hydraulic fluid to the two cylinders at the bottom of the platform to provide lifting pressure. This lift was designed for the sole purpose of performing service, repairing and inspection on automotive vehicles. Any other use not described is to be considered as improper use, and thus it will be under the whole responsibility of the owner/operator.

Follow the instructions in this guide carefully to ensure proper function, efficiency and a long operational life. Keep this guide as well as all the supplied technical literature in a safe place close to the lift so that operators are able to consult it whenever necessary. The technical literature is an integral part of the machine and it must always stay with the product, even in case of sale.

Follow the directions given by this guide with the utmost attention: Advance Auto Parts is not responsible for any damage due to negligence and non-observance of the herewith-contained instructions. The non-observance of herewith-contained instructions will automatically involve the immediate lapse of warranty.

## 1.1 Intended Use

This lift must only be used in the manner for which it is expressly designed. It is forbidden to lift people or others not specified in this guide. Any other use of this equipment not described in this manual is dangerous and should be avoided. The distributor cannot be held responsible for any damage or injury caused by the improper use or by the non-observance of the instructions within this manual:

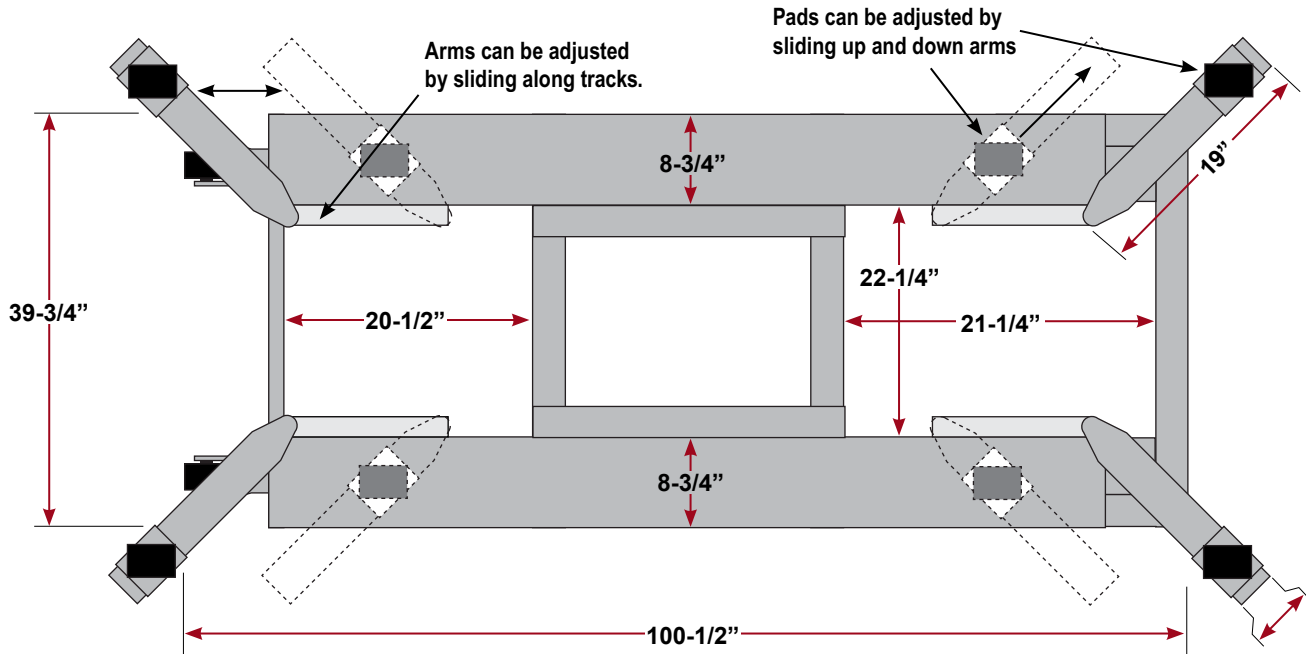
- ***The lift must be installed using the specifications in this manual.***
- ***The owner and all operators must be familiar with all of the operational guidelines laid out within this manual.***
- ***The technical literature is an integral part of the machine. Read this guide carefully before installing or operating this machine, important safety rules for installation, operation and maintenance are enclosed.***

**KEEP THIS AS WELL AS ALL OTHER TECHNICAL LITERATURE  
IN A SAFE PLACE AND CONSULT WHENEVER NECESSARY!**

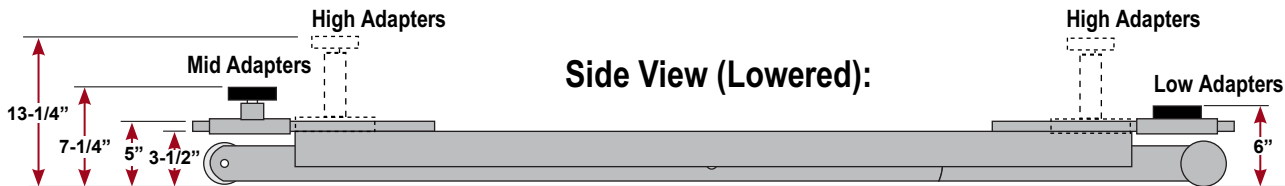
## 1.2 Dimensional Diagram

### DIMENSIONS PSE TCPL-6

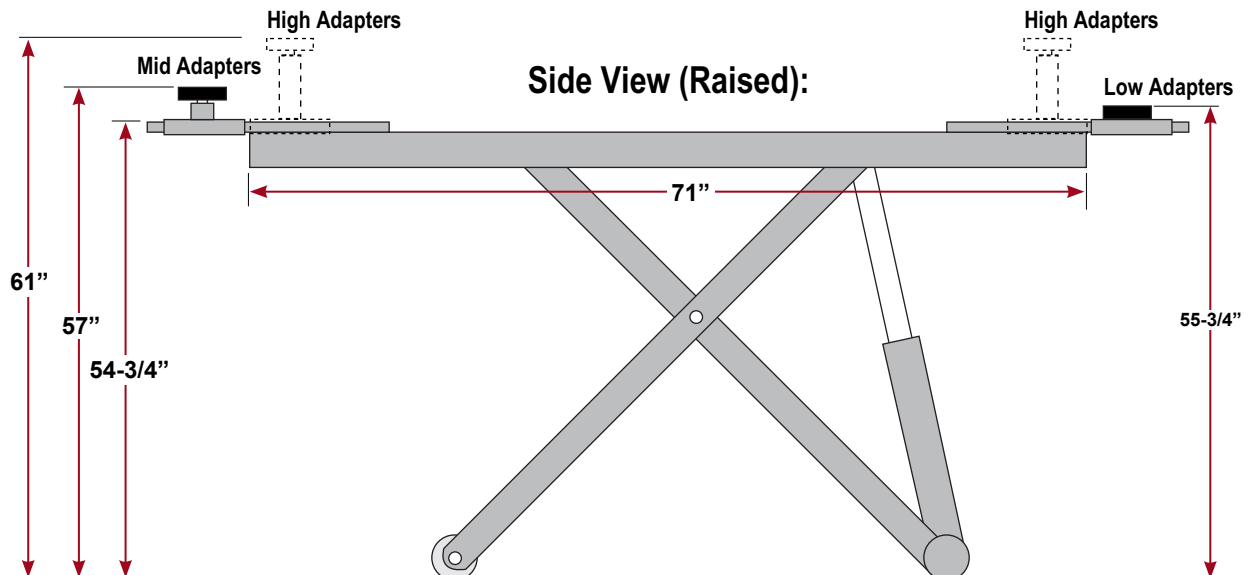
Top View (Lowered):



Side View (Lowered):



Side View (Raised):



## 1.3 Product Specifications

The required electrical Power Cord Plug for this product is a grounded, 110 volt, 3 - prong plug. Never remove the grounding prong or modify the plug in any way. Do not use adapter plugs with this product .When in use, make sure this product is always plugged into a grounded, 110 volt, 3 - hole electrical receptacle with an appropriate breaker switch in-line.

<i>Item</i>	<b>DESCRIPTION</b>
	61"
<i>Weight Lifting Capacity</i>	6,000 Pounds (3,175 kg)
<i>Lift Height</i>	61" HEIGHT w/ (High Adapters)
<i>Rating Pressure</i>	Less Than 2,900 psi
<i>Pump Type</i>	Hydraulic /Electric w /Steel Dolly
<i>Hydraulic Pump Oil Capacity</i>	2 Gallons
<i>Hydraulic Pressure Oil</i>	Wearable Of Hydraulic Pressure Oil [Viscosity 32 - 46 cst mm <sup>2</sup> /s At 40]
<i>Working Condition Temperature</i>	41° F - 104° F
<i>Working Condition Humidity</i>	30% - 80%
<i>Working Height Above Sea Level</i>	MAX 1000 m
<i>Transport / Storage Temperatures</i>	-13° F - 131° F
<i>Electrical Requirements</i>	1 HP
	Single Phase
	110 V
	60 Hz
	3 - Prong Power Plug

## 2.1 Level of Danger

Whenever you find the following warning sign in this guide, pay the utmost attention and follow the relevant safety rules.



**ATTENTION:** Read the following directions with the utmost attention. Non-observance of described procedures/practices can cause serious damages to bystanders.

## 2.2 HAZARDS / WARNINGS



IN THE EVENT OF RAISED VEHICLE FALLS FROM THE LIFT, RUN AWAY TO A SAFE DISTANCE.



ELECTRICAL SHOCK MAY OCCUR WHEN OPENING CONTROL BOX



DO NOT STAND UNDER THE VEHICLE ON THE LIFT WHILE LIFT IS OPERATING. DEATH OR SERIOUS INJURY MAY OCCUR.



AUTHORIZED PERSONNEL ONLY IN LIFT AREA



DO NOT LIFT ONE SIDE OF THE VEHICLE. POSSIBILITY OF VEHICLE OVERTURN AND/OR DAMAGE TO LIFT MAY HAPPEN.



ALWAYS USE SAFETY STANDS WHEN REMOVING OR INSTALLING HEAVY COMPONENTS



DO NOT PLACE ANY POLES UNDER THE VEHICLE AND LOWER IT TO DISMANTLE THE PART FROM THE RAISED VEHICLE.



DO NOT SPRAY WATER DIRECTLY ONTO LIFT.



DO NOT MODIFY ANY SAFETY SYSTEMS OF HOIST. IF SAFETY DEVICE MALFUNCTIONS, SERIOUS ACCIDENT MAY OCCUR.



STOP RAISING LIFT WHEN IMBALANCE IS DETECTED WHILE RASING VEHICLE



DO NOT SHAKE A RAISED VEHICLE EXCESSIVELY. DANGER OF VEHICLE FALLING FROM LIFT MAY OCCUR.



USE VEHICLE MANUFACTURER'S LIFT POINTS



DO NOT PLACE FEET UNDER ANY MOVING PART OF LIFT WHILE LOWERING.



USE HEIGHT EXTENDERS (TRUCK ADAPTERS) WHEN NECESSARY TO ENSURE GOOD CONTACT



DO NOT OPERATE A LIFT WITH PEOPLE ON IT.



DO NOT OPERATE LIFT WHEN HYDRAULIC OIL LEAK IS DETECTED IN THE LIFT AREA

## 2.3 Safety Instructions

The messages and pictures shown are generic in nature and are meant to generally represent hazards common to all automotive lifts regardless of specific style.



**READ OPERATING AND SAFETY  
MANUALS BEFORE USING LIFT!**



**DO NOT OPERATE A DAMAGED LIFT!**



**PROPER MAINTENANCE AND INSPECTION  
ARE NECESSARY FOR SAFE OPERATION!**



**LIFT TO BE USED BY  
TRAINED OPERATOR ONLY!**



## **CAREFULLY READ ALL INSTRUCTIONS BEFORE ATTEMPTING TO INSTALL OR OPERATE THIS LIFT!**

Failure to follow all instructions listed in the following pages may result in electric shock, fire, and / or serious injury.

1. Keep work area clean and well lit. Cluttered, wet, and dark work areas invite accidents.
2. Do not operate this lift in explosive atmospheres, such as in the presence of flammable liquids, gases, or dust. This lift can create sparks which may ignite these flammable objects.
3. Keep bystanders, children, and visitors away while operating this lift. Distractions can cause you to lose control of the equipment.
4. Stay alert watch what you are doing ,and use common sense when operating this lift. Do not use this lift while fatigued or under the influence of drugs, alcohol, or medication. A moment of inattention while operating this lift may result in serious personal injury.
5. **RISK OF ENTANGLEMENT!** Dress properly. Do not wear loose clothing or jewelry. Contain long hair. Keep your hair, clothing, and gloves away from moving parts. Loose clothes, jewelry, or long hair can be caught in moving parts.
6. Avoid accidental starting. Be sure the POWER SWITCH is off before plugging in power unit cord.
7. Remove adjusting keys or wrenches before turning on this lift. A wrench or a key that is left attached to a moving part of the lift can cause damage to the lift or serious accidents.
8. Do not overreach. Keep proper footing and balance at all times. Proper footing and balance enables better control of the this lift in unexpected situations.
9. Use safety equipment. Always wear ANSI approved safety impact eye goggles underneath a full face shield.
10. Only trained and authorized personnel should position vehicle for lifting and operate this lift.
11. Use clamps (not included) or other practical ways to secure and support the work piece to a stable platform. Holding the work by hand or against you body is unstable and may lead to loss of control.
12. Do not use this lift if the POWER SWITCH does not turn it on or off. Any equipment that cannot be controlled with the POWER SWITCH is dangerous and must be repaired or replaced.
13. Disconnect the Power Cord Plug from the power source before making any adjustments, changing accessories, or storing the lift. Such preventive safety measures reduce the risk of starting the equipment accidentally.
14. Maintain power equipment with care. Properly maintained equipment is less likely to fail and are easier to control, do not use damaged power equipment. Tag damaged power equipment "Do not use" until repaired.
15. Check for misalignment or binding of moving parts, breakage of parts, and any other condition that may affect the power equipment's operation. If damaged, have the equipment serviced before using. Many accidents are caused by poorly maintained power equipment.
16. Use only accessories that are recommended by the manufacturer for your model. Accessories that may be suitable for one lift may become hazardous when used on another lift.
17. Service must be performed only by qualified repair personnel. Service or maintenance performed by unqualified personnel could result in a risk of injury.
18. When servicing, use only identical replacement parts. Follow instructions in the "INSPECTION, MAINTENANCE, AND CLEANING" section of this manual. Use of unauthorized parts or failure to follow maintenance instructions may create a risk of electric shock or injury.
19. Grounded tools must be plugged into an outlet properly installed and grounded in accordance with all codes and ordinances. Never remove the grounding prong or modify the plug in any way. Do not use any adapter plugs. Check with a qualified electrician if you are in doubt as to whether the outlet is properly grounded. If the tools should electrically malfunction or break down, grounding provides a low resistance path to carry electricity away from the user.
20. Double insulated tools are equipped with a polarized plug (one blade is wider than the other). This plug will fit in a polarized outlet only one way. If the plug does not fit fully in the outlet, reverse the plug. If it still does not fit. Contact a qualified electrician to install a polarized outlet. Do not change the plug in any way. Double insulation eliminates the need for the three wire grounded Power Cord and grounded power supply system.
21. Avoid body contact with grounded surfaces such as pipes, radiator and ranges. There is an increased risk of electric shock if your body is grounded.
22. Do not expose this lift or the power unit to rain or wet conditions. Water entering a power tool will increase the risk of electric shock
23. Do not abuse the Power Cord. Never use the Power Cord to carry the tools or pull the plug from an outlet. Keep the Power Cord away from heat, oil, sharp edges, or moving parts. Replace damaged Power Cords immediately. Damaged Power Cords increase the risk of electric shock.
24. Improperly connecting the grounding wire can result in the risk of electric shock. Check with a qualified electrician if you are in doubt as to whether the outlet is properly grounded. Do not modify the power cord plug provided with the tool. Never remove the grounding prong from the plug. Do not use the tool if the power cord or plug is damaged. If damaged, have it repaired by a service facility before use. If the plug



will not fit the outlet, have a proper outlet installed by a qualified electrician.

25. IMPORTANT! If the Lift is to be powered by a 230 volt, grounded, electrical outlet, a 230 volt grounded Power Cord (not included) must be wired to the Motor. Also, a 230 volt, grounded, Power Cord Plug (not included) must be attached to the Power Cord. This wiring procedure must only be done by a qualified, certified electrician.
26. DANGER! Make sure you know the weight of the vehicle you are going to lift before using the Lift. Do not exceed the maximum lift capacity (6,000 pounds) for the Lift. Overloading the Lift could cause personal injury and / or property damage. Be aware of dynamic loading! If a weight suddenly falls onto the Lift. It may create for a brief instant an excess load which may result in personal injury and / or damage to the vehicle and Lift.
27. Use the Lift only in well ventilated areas. Carbon monoxide exhausted from running vehicle engines is a colorless, odorless fume that, if inhaled, can cause serious personal injury.
28. Make sure to read and understand all instructions and safety precautions as outlined in the manufacturer's manual for the vehicle you are lifting. All four Rubber Saddles (39B) of the Lift must be used when lifting a vehicle. Always use the manufacturer's recommended lifting points.
29. DO NOT use the Lift on any asphalt surface. Make sure the Lift used on a dry, oil/grease free, flat, level, concrete surface capable of supporting the weight of the Lift. Do not use the Lift on concrete expansion seams or on cracked, defective concrete.
30. Always examine the Lift for structural cracks, bends, damage to the hydraulic hoses and electrical wiring, and any other condition that may affect the safe operation of the Lift. Do not use the Lift even if minor damage is detected.
31. IMPORTANT! Operation (raising or lowering) of the Lift can be immediately stopped at any time by releasing pressure on the POWER SWITCH located on the Motor.
32. Make sure the oil tank is completely filled (approx. 1-1/2 Gallons) with a premium quality hydraulic oil prior to operate the Lift.
33. Always allow at least two seconds after the Motor starts to raise or lower the Lift. Failure to do so may cause the Motor to burn out.
34. Prior to beginning a job, make sure the Safety Lock Assembly (36B) and its Safety Catches are in the proper position. Never work underneath a vehicle without using additional safety support devices such as tri-pod stands to support the vehicle.
35. Always keep hands, fingers, and feet away from the moving parts of the Lift when applying or releasing a load. Remain clear of the Lift when raising or lowering a vehicle.
36. Use extreme caution when applying or releasing a load. Never allow the load to suddenly release. Slowly and carefully apply and release the load.
37. Never leave the Lift unattended when the Lift is loaded.
38. Before driving a vehicle onto the Lift make sure the Lift is fully lowered. Before driving a vehicle onto the Lift, position the Plates (42B) and Rubber Saddles (39B) inward. Do not hit or run over the Plates and Rubber Saddles, as this could damage the vehicle and/or lift. Make sure the Lift is fully lowered before driving the vehicle off.
39. Should any weight component be removed from, or added to the vehicle, use a jack stand (not included) to support the over balanced end during the maintenance procedure. Do not operate the Lift if the vehicle load tilts or binds during the up or down movement. Always position the vehicle with the center of gravity midway between the Rubber Saddles (39B).avoid excessive rocking of the vehicle while it is its raised position.
40. Never lift a vehicle with anyone inside it. Do not allow others in the lift area while operation the Lift. Do not allow anyone to ride on the Lift while it is being raised or lowered.
41. When lifting a vehicle raise the Rubber Saddles (39B) slowly until the rubber saddles securely contact the vehicle manufacturer's recommended lifting points. Then, lift the vehicle to the desired working height. Always lift the vehicle high enough for the Safety Lock Assembly (36B) to operate properly.
42. Do not use the Lift as a permanent stand for a vehicle. Use the Lift only while making repairs. Then, immediately remove the vehicle from the Lift.
43. Before lowering the Lift, make sure tool trays, stands, and all other tools and equipment are removed from under the vehicle.
44. Make sure to squeeze and hold in on the Brake Lever (13B) before attempting to lower the vehicle. Do not release on the Brake Lever until the Lift is completely lowered.
45. Before removing a vehicle from the Lift make sure the Plates (42B) and Rubber Saddles (39B) are moved inward to provide an unobstructed exit.
46. In the general rated load state of the lift , the lift should produce around 75 dB of operating noise.
47. Forbid tearing up the warning or other labels of the lift



***The warnings, precautions, and instructions discussed in this manual cannot cover all possible conditions and situations that may occur. The operator must understand that common sense and caution are factors which cannot be built into this product, but must be supplied by the operator.***



**ONLY AFTER CAREFULLY READING  
ALL OF THE PRECEDING SAFETY  
WARNINGS SHOULD YOU ATTEMPT  
TO INSTALL OR OPERATE THIS LIFT!**

**Improper installation or operation can cause injury or damage!**

1. **Read this installation and operation manual in its entirety before attempting to install the lift.** Manufacturer or Distributor assumes no responsibility for loss or damage of any kind, expressed or implied, resulting from improper installation or use of this lift. Always use professional installation companies.
2. All persons using this equipment must be responsible, qualified, and carefully follow the operation and safety guidelines contained in this manual.
3. A level floor is required for proper lift installation and operation.
4. **DO NOT** install this lift on any asphalt surface. Only on concrete surface a minimum of 6" thick and 3,000 psi tensile strength with steel or fiber mesh reinforcement.
5. **DO NOT** install this lift over concrete expansion joints or cracks. (Check with your building architect.)
6. **DO NOT** install this lift on an upper floor without written authorization from your building architect. Should only be installed on basement floor.
7. **DO NOT** attempt to lift only part of a vehicle. This lift is intended to raise the entire body of a vehicle only. This will bend the arms and void the warranty.
8. **DO NOT** attempt to use the overhead beam to lift engines, or any other parts out of a vehicle. Doing so will bend the overhead beam and void the warranty.
9. **NEVER lift any persons or vehicles containing persons.** This lift is designed to lift empty vehicles only.

## 4.1 Assembly Instructions

**NOTE:** For additional references to the parts listed in the following pages, refer to the Assembly Diagrams on pages 18, 19 and 20.

## 4.2 Determine The Proper Lift Location:

1. DO not use the Lift on any asphalt surface. Make sure the Lift used on a dry, oil/grease free, flat, level, concrete surface capable of supporting the weight of the Lift. Do not use the Lift on concrete expansion seams or on cracked, defective concrete.
2. Make sure to check the desired location for possible obstructions such as a low ceiling, overhead lines, adequate working area, access ways, exits, etc.
3. Make sure to allow a minimum space of 14 feet in front and behind the Lift to accommodate all vehicles. Certain allowances should be made for special vehicle requirements or unusual floor plans.

## 4.3 To Attach The Hydraulic Pump To The Lift:

1. Locate the Hydraulic Pump in an area where it will be out of the way, is safe from damage and weather, and where it can be easily reached to operate.
2. One end of the General Inlet Pipe (18B) has been pre-attached to the Lift by the manufacturer. To attach the remaining end of the General Inlet Pipe to the Hydraulic Pump wrap the male threads of the Oil Pipe Connector (17B) with about 4" of pipe thread seal tape (not included). Remove the Oil Filler Nut Cap from the threaded Hydraulic Oil Delivery Port. Then, wrench tight the Oil Pipe Connector into the Hydraulic Oil Delivery Port.
3. One end of the Brake Steel Cable (10B) has been pre-attached to the Lift by the manufacturer. The Brake Lever Assembly (13B) is located on the remaining end of the Brake Steel Cable, and must be attached to the Handle (1B) of the Dolly. To do so, slide the Brake Lever Assembly onto the Handle. Then, secure the Brake Lever Assembly by the Handle by tightening the Bolt (14B).

## 4.4 To Fill The Oil Tank with Hydraulic Oil:

The hydraulic Oil Tank has a holding capacity of 1-1/2 Gallons. To fill the Oil Tank, squeeze and hold the Brake Lever (13B) to release any load on the Lift. Remove the Oil Tank Fill Cap on the Oil Tank. Add a premium quality hydraulic oil until the level of the oil is even with the Oil Tank's fill hole. Then, replace the Oil Tank Fill Cap. Before the first use and before all subsequent uses, check the hydraulic oil tank to make sure the Oil Tank is properly filled.

## 5.1 Check The Safety Lock Assembly:

1. **WARNING!** Never operate the Lift if the Safety Lock Assembly is not working properly.
2. Plug the Power Cord of the Lift into a properly grounded, 3-hole, electrical receptacle and allow several seconds for the Motor to warm up.
3. Squeeze and release the Brake Level (13B) several times and, while doing so, observe that the Safety Lock Assembly operates properly in response to the Brake Lever. Then, release pressure on the Brake Lever.
4. Press on the POWER SWITCH and hold, and observe that the Safety Lock Assembly “clicks” into place as the Lift rises. NOTE: there are safety catches on the Safety Lock Assembly as the Lift rises. Once the Safety Lock Assembly locks into each of these safety catches, you must squeeze and hold in on the Brake Lever (13B) to lower the Lift.
5. Once the Lift is fully elevated, release pressure on the POWER SWITCH.
6. Without squeezing the Brake Lever (13B), press in on the Pressure Relief Valve Handle and hold. Observe that the Lift will not lower, as the Safety Lock Assembly is engaged.



**CAUTION:** *If the Safety Lock Assembly does not engage, fully lower the Lift and have a qualified service technician immediately repair the Safety Lock Assembly.*

7. Should the Safety Lock Assembly not operate as described in step #6, raise the Lift slightly to take pressure off the safety catches. Then, while squeezing the Brake Lever (13B) lower the Lift fully to the floor. NOTE: When working properly, you must BOTH squeeze in and hold the Brake Lever and press in and hold the Pressure Relief Valve Handle to lower the Lift.

## 5.2 To Position, Lift, And Lower Vehicles On The Lift:

1. Before driving a vehicle onto the Lift make sure that the Lift is fully lowered, and position the Plates (42B) and Rubber Saddles (39B) inward.
2. Drive the vehicle over the Lift while keeping the vehicle parallel with the Lift and aligning the center of gravity of the vehicle with the center of the Lift. NOTE: the “Center Of Gravity” (COG) of the vehicle is the balance point at which there is equal weight in front of and behind the COG and equal weight on both sides of the COG. The COG is not necessarily the dimensional center of the vehicle, but is often slightly toward the engine from the dimensional center of the vehicle.
3. Turn off vehicle’s engine and engage the parking brake of the vehicle.
4. Read the vehicle owner’s manual to identify the recommended vehicle lifting points.
5. Move the Plates (42B) outward, and position the Rubber Saddles (39B) to contact the

vehicle lifting points.

6. Do not lift the vehicle if you cannot establish secure and level lifting points. Do not use sub-standard shims or other devices in place of approved and recommended Rubber Saddles (39B) adapters. Never use the Lift without the Rubber Saddles in place on each Plate (42B) and in contact with the lifting points of the vehicle.
7. Once the Rubber Saddles (39B) have been positioned under the vehicle lifting points, operate the POWER SWITCH to lift the vehicle slightly, and test to make sure the vehicle is well balanced and the contact between the Rubber Saddles and vehicle lifting points are secure. Then, proceed to lift the vehicle to the desired height.
8. When the vehicle has been lifted to the desired height, and the Safety Lock Assembly has locked in place, make sure to install proper safety jack stands (not included), under the vehicle once it is lifted to the desired height, as an additional safety measure.
9. Once the repair work to the vehicle is completed make sure to remove all tools, safety jack stands, and materials from under the vehicle and Lift. Also, make sure the work area is clear and it is safe to lower the vehicle.
10. To lower the Lift, use the POWER SWITCH and raise the vehicle slightly to take weight off the Safety Lock Assembly. Then, release pressure on the POWER SWITCH.
11. Stand well away from the Lift and vehicle. Then squeeze and hold in the Brake Lever (13B) while at the same time pushing in and holding the Pressure Relief Valve Handle to slowly lower the Lift all the way down to the floor.
12. Move the Rubber Saddles (39B) and Plates (42B) inward, out of the path of the vehicle.
13. Disengage the vehicle parking brake. Start the vehicle's engine, and drive the vehicle off the Lift slowly and carefully.

**AGAIN, THE PROPER OPERATION OF THE LIFT REQUIRES THAT ANY TIME YOU RAISE A VEHICLE TO WORK ON IT, YOU MUST LOWER THE LIFT ONTO THE SAFETY LOCKS.** This is done by raising the vehicle to the desired height and lowering the lift by pressing the release valve handle until the arms stop on the next available lock. Note: The power unit is not made to hold the load and may bleed down on the locks.

To lower the vehicle, you must first raise the lift off of the locks using the power up button. Then engage and hold the lowering handle on the power unit until the lift is on the ground.



***Never work under or near this lift without the locks being engaged. The power unit is not designed to be a load-holding device. Not using the locks will result in a premature failure of the cylinders, pump and/or cables and can cause serious property damage or personal injury! Failure to heed this warning will result in immediate termination of your warranty.***

## 6.0 Maintenance Schedule

The following periodic maintenance is the suggested minimum requirements and minimum intervals; accumulated hours or monthly period, which ever comes sooner. If you hear a noise or see any indication of possible failure - cease operation immediately and inspect, correct and/or replace parts as required. Following these maintenance procedures is the key to prolonging the useful life of your lift.

**IF AT ANY TIME YOU'RE NOT SURE OF THE SAFE OPERATION OF THE LIFT, DISCONTINUE USING IT AND CALL YOUR DISTRIBUTOR FOR ASSISTANCE.**



***Warning OSHA and ANSI require users to inspect lifting equipment at the start of every shift. These and other periodic inspections are the responsibility of the user.***

### 6.1 DAILY PRE-OPERATION CHECK:

The user should at least perform the following checks daily.

- Daily check of safety latch system is very important - the discovery of device failure could save you from expensive property damage, lost production time, serious personal injury and even death.
- Check safety latches for free movement and full engagement with rack.
- Check hydraulic connections, and hoses for leakage.
- Check snap rings at all rollers, sheaves and on all screw up pads.
- Check bolts, nuts, and screws and tighten.
- Check wiring & switches for damage.
- Keep base plate free of dirt, grease or any other corrosive substances.
- Check for stress cracks in the concrete floor near the anchor bolts which, if present, could cause the anchor bolts to loosen and pull out of the floor.
- Check Cables: The cables keep both sides of the lift running equally allowing the safeties to catch together. If one side of your lift is running ahead of the other, most likely it is time to adjust your cables. Follow this simple procedure. Refer to page #7 step #4 for adjustment!

## 6.2 WEEKLY MAINTENANCE:

- Check floor for stress cracks where lift is operated.
- Check hydraulic oil level.
- Check and tighten bolts, nuts, and all screws.

## 6.3 YEARLY MAINTENANCE:

- All of the rollers and swivel points on your lift should be sprayed with a light oil such as WD-40 or similar lubricant, two to three times a year.
- Change the hydraulic fluid - good maintenance procedure makes it mandatory to keep hydraulic fluid clean. No hard fast rules can be established; - operating temperature, type of service, contamination levels, filtration, and chemical composition of fluid should be considered. If operating in dusty environment a shorter interval may be required.

## **The following repairs should only be performed by a trained hydraulic maintenance expert:**

- Replacement of hydraulic hoses.
- Replacement of major lift components.
- Replacement or rebuilding hydraulic cylinders.
- Replacement or rebuilding power unit pumps / motors.
- Checking hydraulic cylinder rods and rod ends (threads) for deformation or damage.
- Checking cylinder mounting for looseness and /or damage.

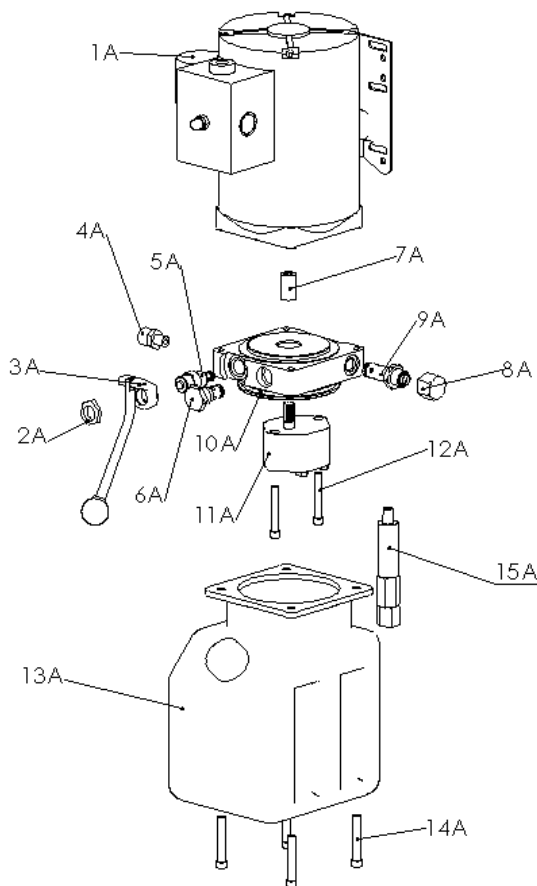
Relocating or changing components may cause problems. Each component in the system must be compatible; an undersized or restricted line will cause a drop in pressure. All valve, pump, and hose connections should be sealed and/or capped until just before use. Air hoses can be used to clean fittings and other components. However, the air supply must be filtered and dry to prevent contamination. Most important - cleanliness - contamination is the most frequent cause of malfunction or failure of hydraulic equipment.

# 7.0 Trouble Shooting

<b>PROBLEM</b>	<b>CAUSE</b>	<b>SOLUTION</b>
<b><i>Motor does not run:</i></b>	No power source	Check/replace the cable, the end of wire or fuse box
	The voltage is incorrect	The PSE TCPL-6 power unit requires a 208V - 230V power source. Only a Qualified Electrician should wire your Power Unit!
	The control button is damaged	Replace the control button, contact your distributor to order part or to ensure proper replacement is used.
	Motor windings burned out	Replace Motor
<b><i>Motor runs but will not raise lift:</i></b>	Motor runs in reverse rotation	Change Motor rotation by reversing leads
	Unload valve opened up or malfunctioning	Replace or repair unload valve
	Pump sucking air	Tighten all suction line valves
	Low oil level	Fill Tank
<b><i>Motor runs and raises unloaded lift but will not raise vehicle:</i></b>	Motor running on low voltage	Supply correct voltage to Motor
	Overloading lift	Check vehicle weight on lift
	Unload valve malfunction	Replace unload valve
<b><i>Cannot lower lift:</i></b>	Unload valve operating handle is damaged	Replace unload valve operating handle
	The hydraulic oil is too dirty and causing malfunction	Replace the hydraulic oil



## 7.1 PARTS LIST/ASSEMBLY DIAGRAM A



Part #	Description	Qty.
1A	Motor	1
2A	Nut (M12x1.5)	1
3A	Pressure Relief Valve Handle	1
4A	Oil Fill Cap	1
5A	Release Valve Assembly	1
6A	Check Valve Assembly	1
7A	9 Gear Bearing Gap	1
8A	Safety Valve Cap	1
9A	Safety Valve Assembly	1
10A	Valve Seat	1
11A	Gear Pump	1
12A	Bolt	2
13A	Oil Tank	1
14A	Bolt	4
15A	Bumper Assembly	1

**NOTE:** Some parts are listed and shown for illustration purposes only, and are not available individually as replacement parts on diagrams A, B & C.

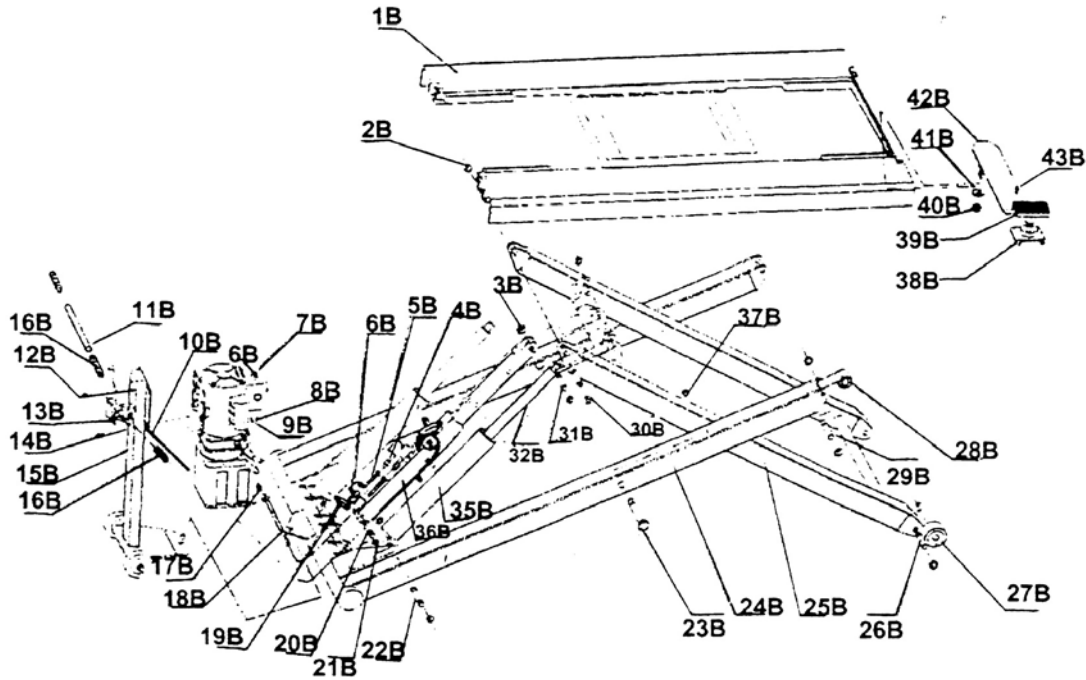


**CAUTION: RISK OF EXPLOSION:** This equipment has internal arcing or sparking parts which should not be exposed to flammable vapors. This equipment should be located at least 18" above the floor. Motor not protected from external overheating - this must be provided by owner.



**CAUTION:** Allow 2 seconds between motor starts, failure to do so may result in motor burn out!

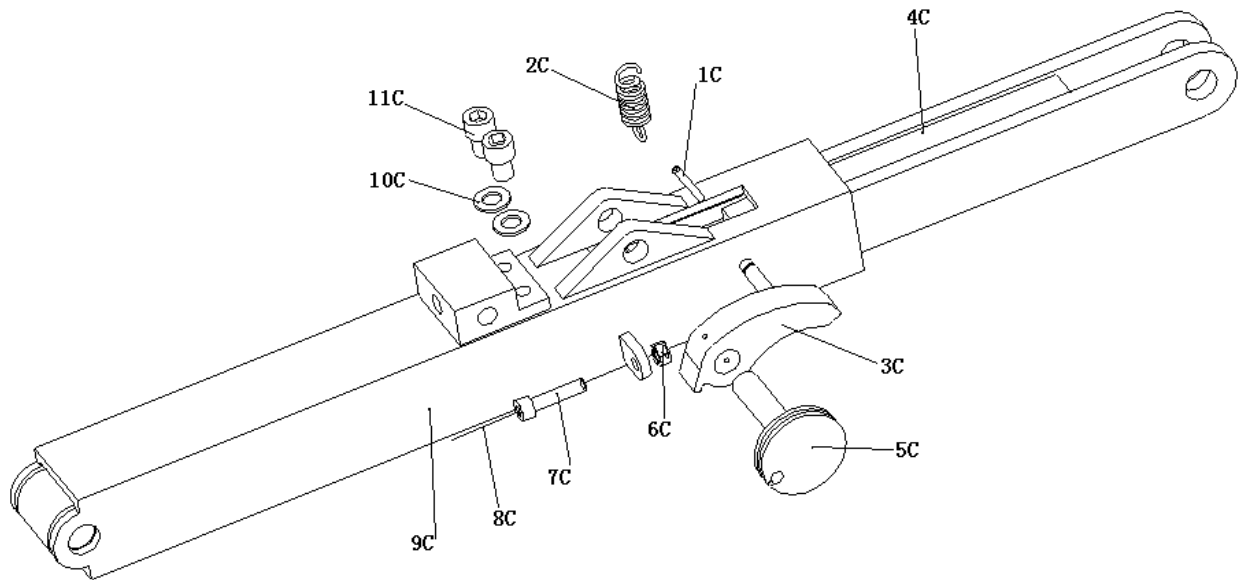
## 7.2 PARTS LIST/ASSEMBLY DIAGRAM B



Part #	Description	Qty.
1B	Table	1
2B	Retaining Ring (18)	8
3B	Locking Nut (M20)	1
4B	Oil Pipe Connector (3)	3
5B	Branch Inlet Pipe	2
6B	Oil Pipe Connector (2)	2
7B	Oil Supply Fitting	1
8B	Nut (M8)	4
9B	Washer (8)	4
10B	Brake Steel Cable	4
11B	Handle	1
12B	Hex Screw (M8)	4
13B	Brake Level Assembly	1
14B	Bolt (M8)	4
15B	Transmission Holder	1
16B	Rubber Cap	3
17B	Oil Pipe Connector (1)	1
18B	General Inlet Pipe	1
19B	Check Valve	2
20B	Safety Locking Pin	1
21B	Retaining Ring (20)	20
22B	Cylinder Pin	2
23B	Scissor Pin	2

24B	Outer Scissor	1
25B	Inner Scissor	1
26B	Wheel Pin	2
27B	Large Wheel	2
28B	Small Wheel	2
29B	Wheel Pin	2
30B	Connecting Pin	2
31B	Cylinder Pin	2
32B	Safety Locking Pin	1
35B	Cylinder Assembly	2
36B	Safety Locking Assembly	1
37B	Retaining Ring (24)	2
38B	Saddle Holder	4
39B	Rubber Saddle	4
40B	Locking Nut	4
41B	Washer (20)	4
42B	Plate	4
43B	Bolt (M8 x 20)	4

## 7.3 PARTS LIST/ASSEMBLY DIAGRAM C



Part #	Description	Qty.
1C	Pin	1
2C	Spring	2
3C	Lock Block	1
4C	Lock Pole	3
5C	Lock Wheel	1
6C	Nut (M8)	1

7C	Bolt (M8)	1
8C	Steel Wire Cable	1
9C	Lock Sheath	1
10C	Washer (12)	1
11C	Bolt (M12)	1



# LIMITED LIFT WARRANTY



**This limited warranty is not transferable from the original retail purchaser.**

**No warranty exists until each piece of equipment is completely paid for. It only applies to vehicle lifts and not to any other automotive related equipment that may have been purchased from Advance Auto Parts.**

Power units are covered for defects in workmanship for one (1) year. Any misuse of power unit will void this warranty. For power unit warranty repairs the original purchaser needs to provide the following information: (1) Date code of the power unit, (2) Serial number of the power unit, and (3) Model number. In cases of Power Unit replacements you will be sent a replacement power unit after billing your charge card. It is the original purchaser's responsibility to properly drain and box the defective unit, tag it, and call UPS to pick it up and have it shipped back to us. After receiving the power unit back to our facility and an inspection will be made to the unit to insure it was defective from the manufacturer. If it is the manufacture's defective unit we will credit your credit card back less any shipping. Failure to follow these procedures will void the power unit warranty and any credit to your credit card.

Any other lift parts (other than hydraulic hoses, power units, cables, or parts made by other manufacturers) which is found by the factory to be defective **WITHIN FIVE (5) YEARS**, and which was not found to have been abused, will be repaired or replaced (at the manufacturer's or master lift distributor's option). Defects caused by ordinary wear and tear, abuse, misuse, overloading, accident (including shipping damages), improper maintenance and alterations not approved by the manufacturer or master lift distributor are specifically excluded.

The manufacturer & master lift distributor reserves the absolute right to decline responsibility for repair work made or attempted by any company or person not associated with, or approved beforehand, by the manufacturer or master lift distributor.



**WARRANTY LABOR IS NOT INCLUDED under warranty unless expressly approved by the manufacturer before the repairs are attempted or by your master lift distributor in writing.**

## ***Maintenance Notes:***

## ***Maintenance Notes:***

# Warranty Activation Form

**ATTENTION: MAIL TODAY TO ACTIVATE YOUR WARRANTY !**

**WARRANTY IS NON-TRANSFERABLE**

Company Name: \_\_\_\_\_

Owner / Shop Manager: \_\_\_\_\_

Address: \_\_\_\_\_

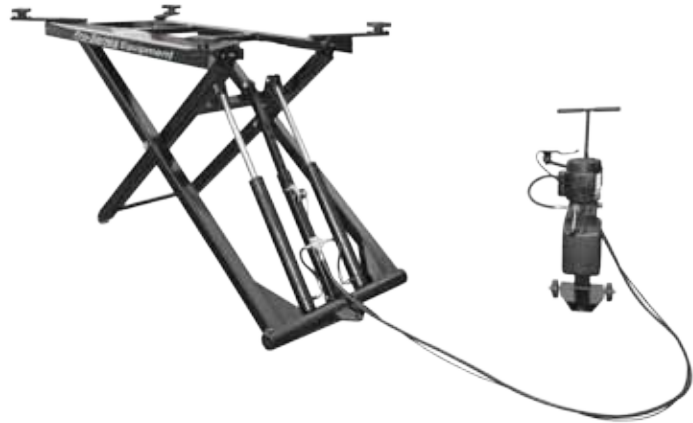
Phone: (    ) \_\_\_\_\_ Fax: (    ) \_\_\_\_\_ Cell: (    ) \_\_\_\_\_

City/State/Province/Zip: \_\_\_\_\_

E-mail: \_\_\_\_\_

## PSE TCPL-6 - Scissor Lift

Model No.:	PSE TCPL-6
Capacity:	6,000 lbs.
Serial No.:	
Date:	



Purchased From: \_\_\_\_\_ Purchase Date: \_\_\_\_\_

Address: \_\_\_\_\_

City: \_\_\_\_\_ State: \_\_\_\_\_ Zip: \_\_\_\_\_

Office Phone: (    ) \_\_\_\_\_ Cell Phone: (    ) \_\_\_\_\_

**FOLD IN HALF, TAPE TOP, APPLY STAMP & MAIL !!!**

Place  
Stamp  
Here

Pro Series Equipment  
P.O. Box 734  
Franklin, IN 46131-0734

Pro Series Equipment  
P.O. Box 734  
Franklin, Indiana 46131-0734  
ATTN.: Warranty Dept.